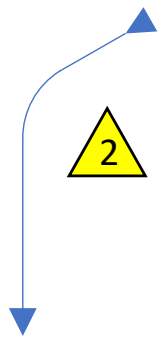
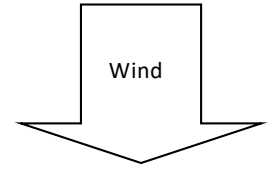
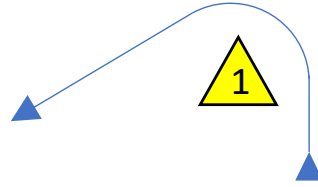
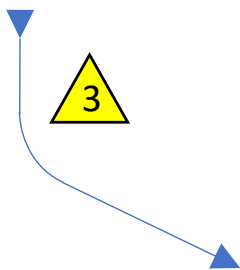
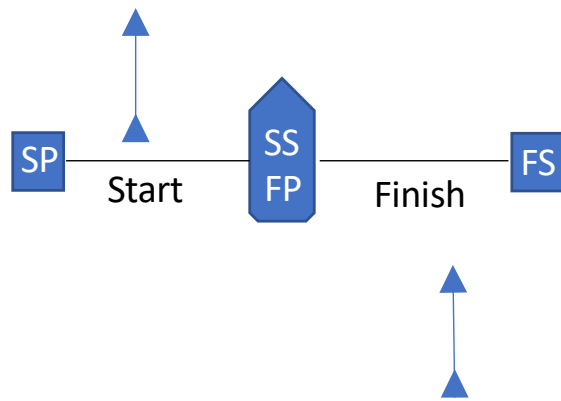


# Opti Green

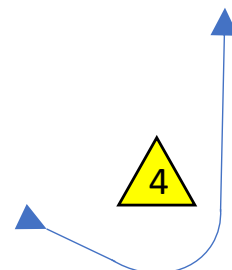
1A



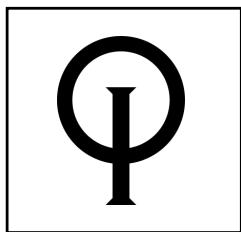
5



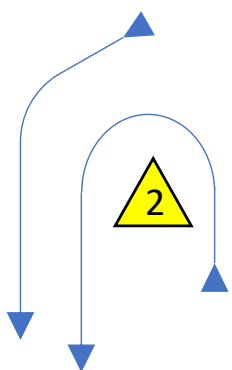
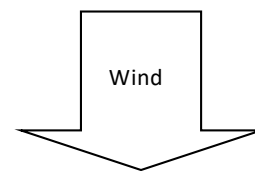
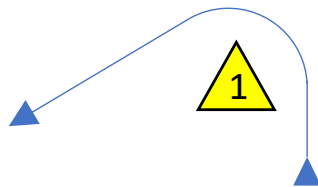
Course: S - 1 - 2 - 3 - 4 - F



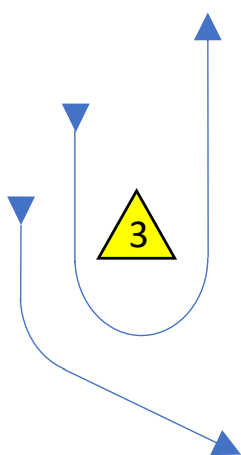
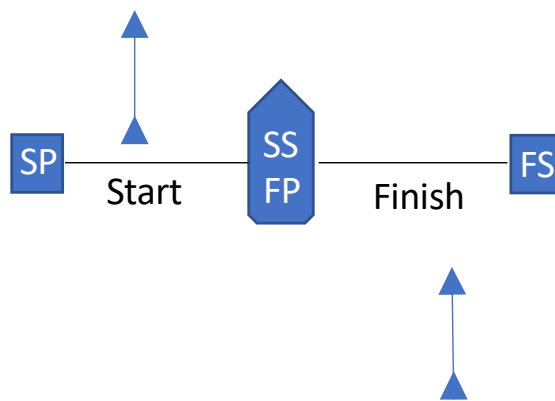
Opti Open  
Open Skiff  
P Class



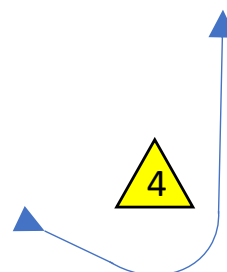
1A



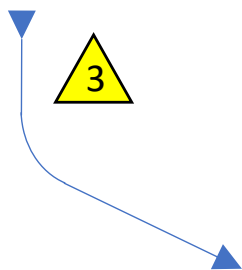
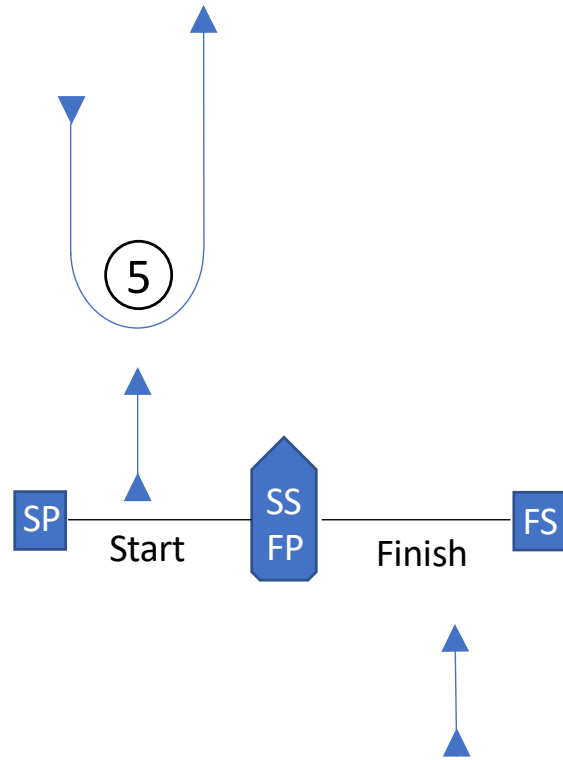
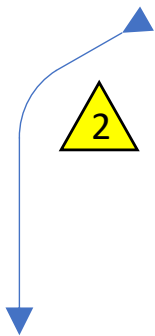
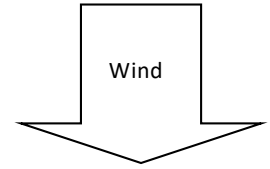
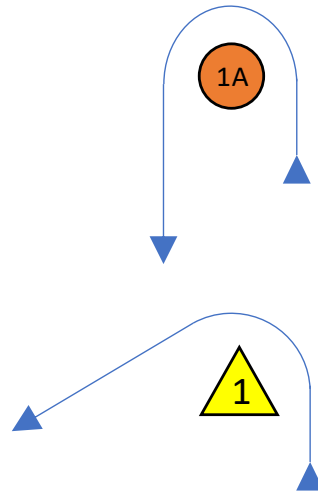
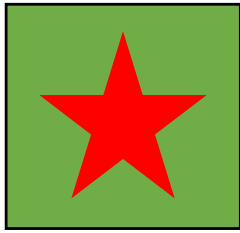
5



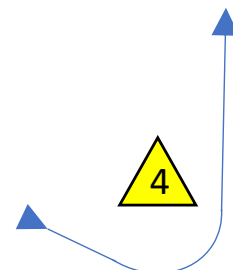
Course: S - 1 - 2 - 3 - 2 - 3 - 4 - F



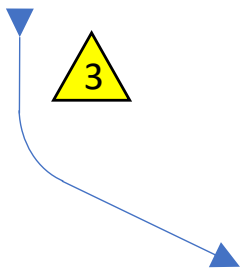
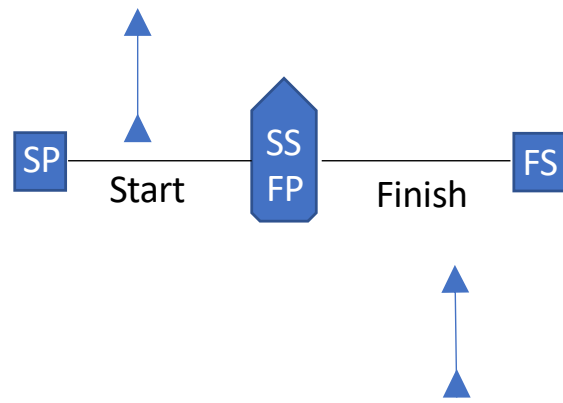
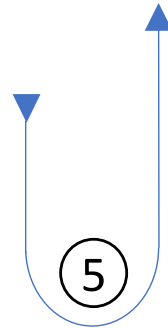
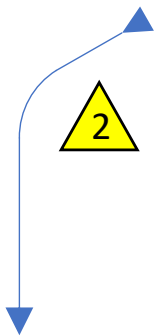
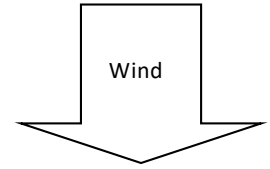
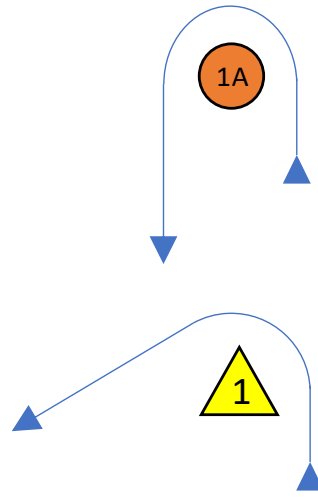
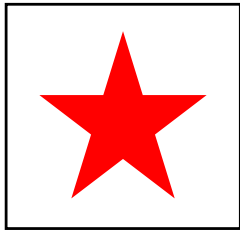
# Starling Green



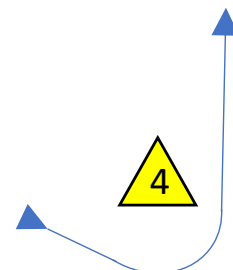
Course: S – 1A – 5 – 1 – 2 – 3 – 4 – F



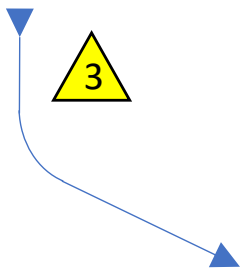
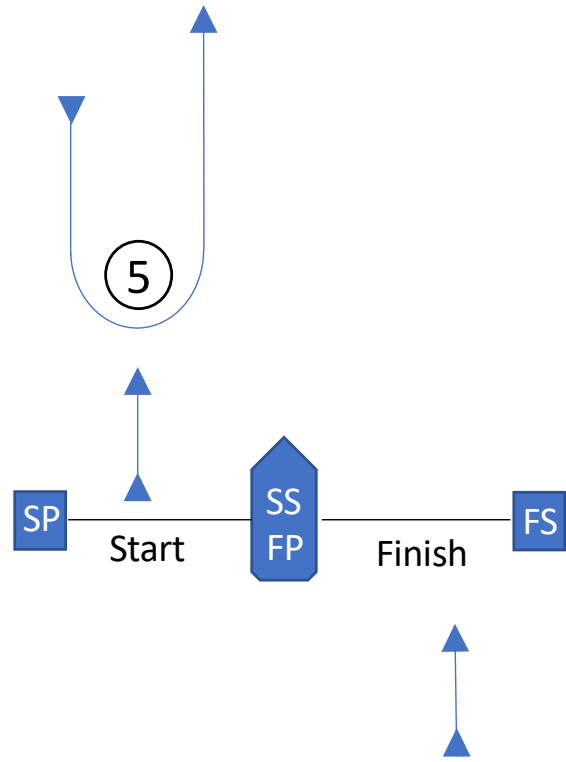
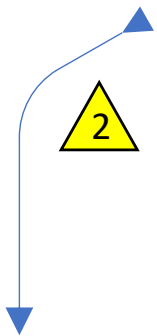
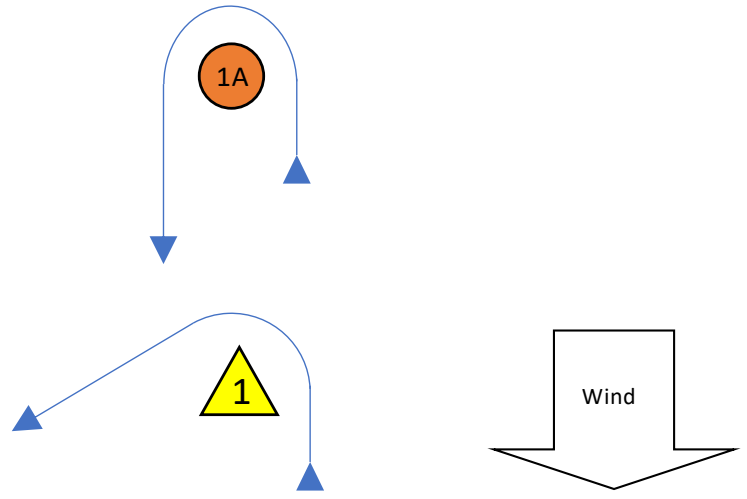
# Starling Open



Course: S – 1A – 5 – 1 – 2 – 3 – 4 – F



Feva  
Mistral



Course: S – 1A – 5 – 1 – 2 – 3 – 4 – F

